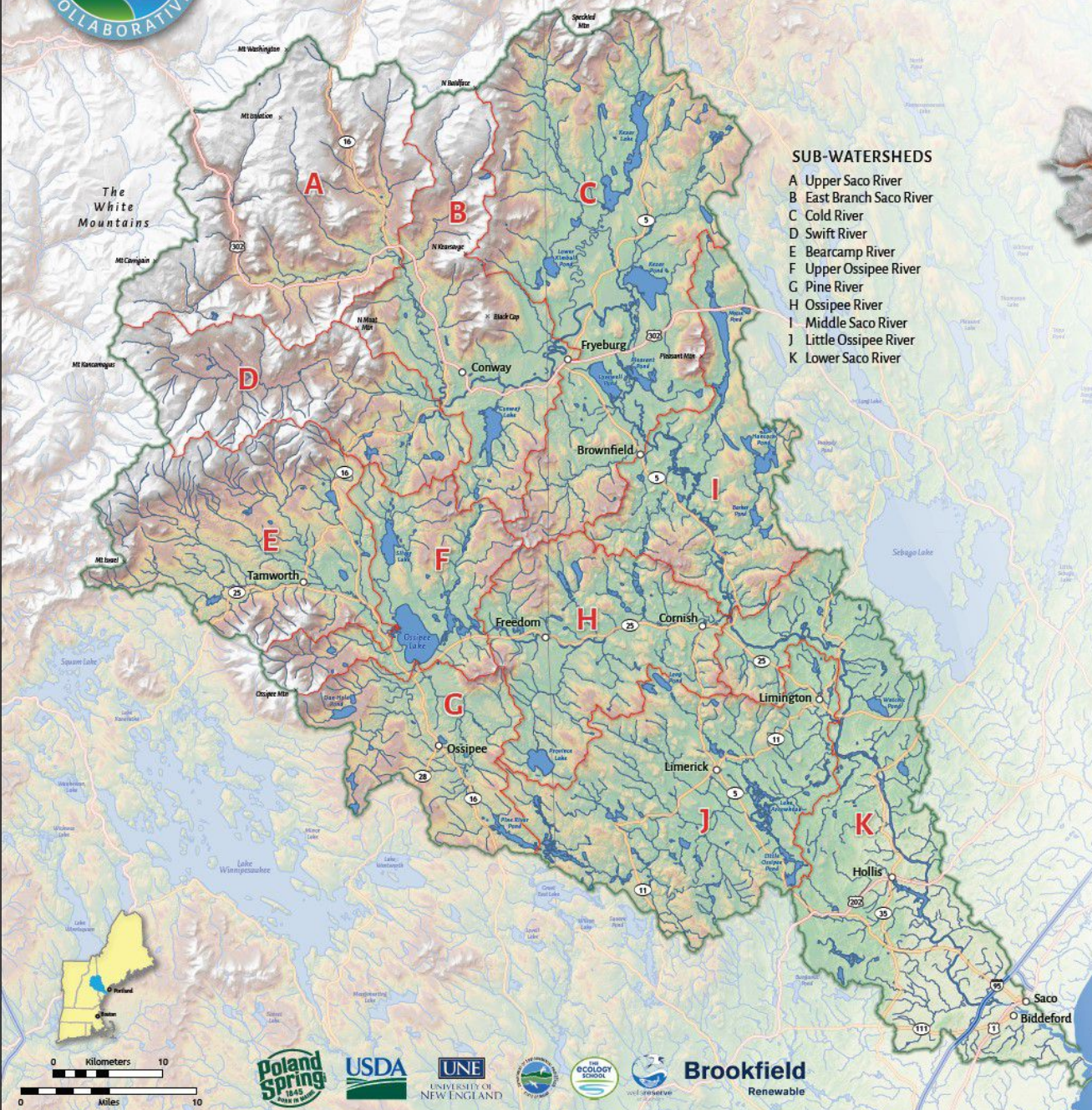




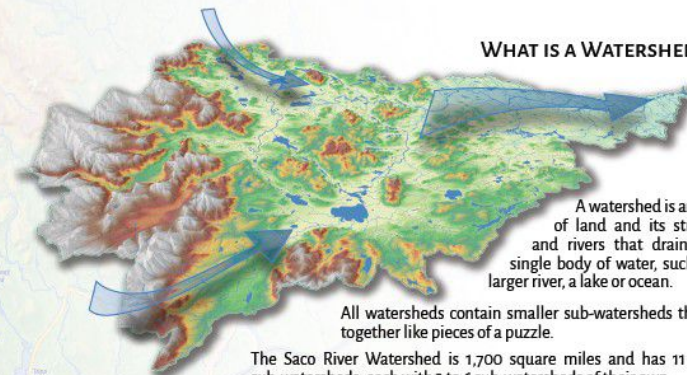
THE SACO RIVER WATERSHED

SUSTAINING THE SACO FROM THE HEADWATERS TO THE SEA



SUB-WATERSHEDS

- A Upper Saco River
- B East Branch Saco River
- C Cold River
- D Swift River
- E Bearcamp River
- F Upper Ossipee River
- G Pine River
- H Ossipee River
- I Middle Saco River
- J Little Ossipee River
- K Lower Saco River



WHAT IS A WATERSHED?

A watershed is an area of land and its streams and rivers that drain to a single body of water, such as a larger river, a lake or ocean.

All watersheds contain smaller sub-watersheds that fit together like pieces of a puzzle.

The Saco River Watershed is 1,700 square miles and has 11 main sub-watersheds, each with 3 to 6 sub-watersheds of their own.

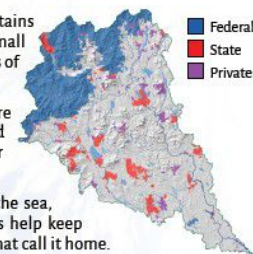
Whatever enters the water in one watershed affects all watersheds downstream

LAND CONSERVATION is critical to the health of the Saco Watershed

The undeveloped lands of the White Mountains National Forest help ensure the health of small rivers and streams that make up the headwaters of the Saco.

Further downriver, many critical habitats are conserved to protect important plant and animal communities and maintain the water quality of the Saco.

Finally, in the estuary where the Saco meets the sea, protected wetlands and controls on discharges help keep this area healthy for the thousands of species that call it home.



HABITAT DIVERSITY helps support a wide variety of animal species

Brook trout prefer the cold, well-oxygenated streams in the upper watershed and elsewhere, where spruce, fir and hardwood forests are the dominant habitats.

Belted kingfisher nest in burrows along the Saco and take advantage of perches in riparian habitats to watch for frogs and fish in the waters below.

The endangered New England cottontail finds its home in the scrub pine and successional habitats of the lower watershed.

The American eel and the great blue heron are among the many species that call the productive land and waters of the estuary home.

- Spruce-Fir
- Riparian
- Scrub Pine
- Estuary

FOR MORE INFORMATION ABOUT THE SACO WATERSHED PLEASE VISIT: www.sustainthesaco.org

The Saco River Watershed map was made possible by grant funding from Poland Spring, a subsidiary of Nestle Waters North America Inc. In cooperation with the partners listed, the grant was managed by ATTAINING/Robyn Saunders, Project Manager for the Saco Watershed Collaborative. Drawings provided by Emily Greene, Outreach Coordinator for the Saco Watershed Collaborative. All work is copyright by Poland Spring and Northern Geomatics/Bill Duffy.

Design and cartography
Bill Duffy
NORTHERN GEOMATICS
www.northgee.com

